



Rabbit anti Crystallin (pS59) Polyclonal Antibody

Alternative Name(s): Raf-A

Order Information

- **Description:** Crystallin(A-Beta) (pS59)
- **Catalogue:** 630-400
- **Lot:** See label
- **Size:** 100ug/200ul
- **Host:** Rabbit
- **Clone:** nan
- **Application:** IHC(P), WB
- **Reactivity:** Hu, Ms, Rt, Bv

ANTIGEN PREPARATION

A synthetic peptide SFLRAP-(pS)-WFD containing the phosphorylation site Serine 59 of human Crystallin (A-beta) protein. This sequence is identical among rat and mouse

BACKGROUND

Crystallin A-Beta (CryAB) is a member of the small heat shock protein (HSP20) family. Alpha crystallins are composed of two gene products: alpha-A and alpha-B, for acidic and basic, respectively. Alpha-A is preferentially restricted to the lens and alpha-B is expressed widely in many tissues and organs. CryAB can be induced by heat shock, ischemia and oxidation. The protein is known to protect cells from stress damage. It may also play an important role in the Golgi reorganization during cell division. Phosphorylation of CryAB is also known to be associated with a number of neurodegenerative diseases such as Alzheimer's disease and has been implicated in breast tumors of patients with shorter survival, suggesting that it may be a useful marker in identifying aggressive breast cancer.

PURIFICATION

The Rabbit IgG is purified by site-modified Epitope Affinity Purification.

FORMULATION

This affinity purified antibody is supplied in sterile Tris-buffered saline (pH7.2) containing antibody stabilizer

SPECIFICITY

This antibody recognizes human Crystallin(A-Beta) (pS59) protein with a phosphorylation site Serine 59. It cross reacts to human, mice and rat.

STORAGE

The antibodies are stable for 24 months from date of receipt when stored at -20oC to -70oC. The antibodies can be stored at 2oC-8oC for three month without detectable loss of activity. Avoid repeated freezing-thawing cycles.

APPLICATIONS/SUGGESTED WORKING DILUTIONS*

- Western Blot: 0.1-1 µg/ml
- ELISA: 0.01-0.1 µg/ml
- Immunoprecipitation: 2-5 µg/ml
- IHC: 2-10 µg/ml
- Flow cytometry: Not tested
- Molecular Weight: 21.0
- Positive Control: Kidney Tissue
- Cellular Location: Cell Membrane

*Optimal dilutions should be determined by researchers for the specific applications.

FOR RESEARCH USE ONLY.

AbboMax, Inc 2528 Qume Drive, Suite 8, San Jose, California 95131, USA
1 408-573-1898 (Tel). 1 408-573-1858 (Fax). www.abbomax.com info@abbomax.com

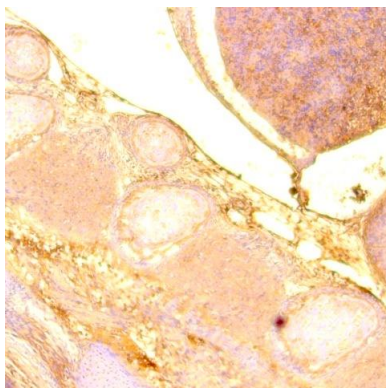


FOR RESEARCH USE ONLY.

AbboMax, Inc 2528 Qume Drive, Suite 8, San Jose, California 95131, USA
1 408-573-1898 (Tel). 1 408-573-1858 (Fax). www.abbomax.com info@abbomax.com



DATA ATTACHMENTS



Immunohistochemistry: Mouse embryonic tissue (FFPE) stained with Rabbit anti-Crysallin A-beta (pS59) (Cat# 630-400) at 1:200 for 10 min @ RT. Staining of formalin-fixed tissue requires boiling tissue sections in 10 mM Citrate Buffer, pH 6.0 for 10 min followed by cooling at RT for 20 min.

REFERENCES

FOR RESEARCH USE ONLY.

AbboMax, Inc 2528 Qume Drive, Suite 8, San Jose, California 95131, USA
1 408-573-1898 (Tel). 1 408-573-1858 (Fax). www.abbomax.com info@abbomax.com